



Langtved Data A/S

Newsletter

No. 7

12th December 2011



Introduction

In this issue we have the following topics:

Langtved Data is going into Space!

New headquarters in Ringsted

HudRask.dk: a telemedicinal application

Push-Button integration with the MidtEPJ

New features

- Storage of new objects in the database.
- Integration with MidtEPJ
- Dispatch of E-mails with messages or reports

Merry Christmas

Tor Foss Mortensen
Managing Director





Space

Langtved Data A/S has since October 2007 been a partner to euroluna, a European organization, participating in the Xprize Competition.

The Xprize organization will give a \$30 million reward to the first privately funded team that sends a robot to the Moon.

As a partner in euroluna we are participating in this contest. We are making software for the navigation and control of Romit, the space module shown below. For budget reasons we have constrained the module to fit within a number of 10 x 10 x 10 cm units, the Cubesat format. Therefore, we have to use a low power microprocessor with a simple operating system.

The picture below shows part of our first space module made in the Cubesat format. It contains several computers, cameras, magnetic coils for directional (attitude) control, solar cells and a power storage unit. In addition, it has built-in magnetometers (a sort of 3 dimensional compass) and gyros.



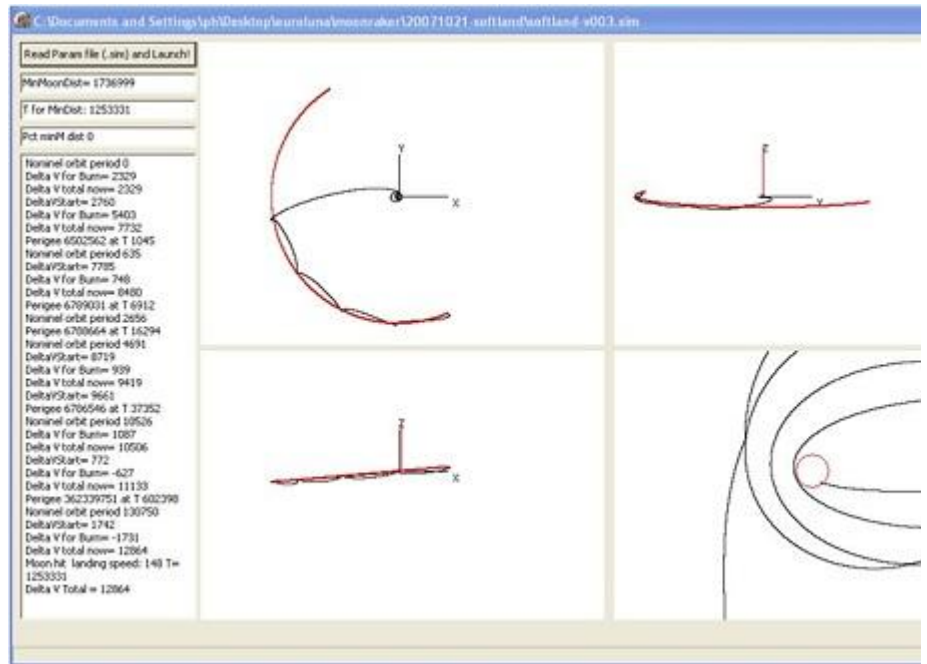
We still need to build-in the propulsion unit (an ion-thruster) and gear for landing and surface transportation.

LD is going to deliver the software:

1. The attitude control i.e. getting the module to point in the right direction.
2. The navigation software both ground-based and onboard.
3. Control of the landing sequence.



The screen shot below shows three perpendicular projections of a trajectory to the Moon. The fourth window is a close-up of the landing.



The calculations are based on tables of Earth and Moon positions relative to the Sun (Ephemerides), and the laws of classical mechanics.

The software has to be extremely accurate and therefore uses advanced numerical methods. It runs on a normal PC with the Windows operating system.

Why are we doing this?

Let me assure our customers in the Health Sector that we will not abandon them. We are still committed to producing high quality software for you. In fact, less than one third of our manpower is being used in the project.

Secondly, this is an area where I have some expertise and a lot of interest.

Thirdly, a lot of the knowledge developed and gained in space exploration can be reused in other sectors e.g. the health sector.



New Headquarters

A company like Langtved Data A/S, which primarily works with our customers via the Internet, can really be domiciled anywhere where there is a good Internet connection.

This is one reason why, at the end of 2010, we decided to move the company's headquarters to Ringsted. Other reasons were that we needed less and more inexpensive space and that the two valued workers both lived on Zealand.

So, as of 1st April 2011, we made the transition. It went fairly smoothly and I trust that you, our users, have not been affected. If your experience is different, make sure you let us know.

HudRask

Together with the Danish National Allergy Research Centre we developed a secure web application for guidance and monitoring of eczema. The application presents a number of new ideas within telemedicine that are expected to result in improved service for patients. Moreover, time and resource-consuming outpatient care can be reduced - leading to savings.

Part of the assignment is to host the application at Langtved Data over a period of time. It joins another Web application that we run for the Allergy Centre, miniAllergen, targeted for practicing allergy specialists.

The application is in Danish named HudRask.

Region Midt

Push-Button integration with the Electronic Patient Journal in Region Midt in Denmark.

A special taskforce in Region Midt has worked on a strategy for the integration of medical specialty systems into the Electronic Patient Journal in region Midt (MidtEPJ), an integration planned to make MidtEPJ significantly more functional.

The taskforce presented a report in October this year. The strategy that has been accepted by the Region is to make a loose connection between the systems.

The system will function in such a way that when a particular patient is in focus in MidtEPJ and a button is pressed the specialty system will be activated and show data on the same patient in the same context. The two systems are synchronized in such a way that the patient's context is kept the same as the MidtEPJ, showing the same patient, all the time. Also, the user will not have to sign on to more than one application in order to use the combined systems.

This interface could be useful for several of our systems - especially our lab systems. We are therefore working closely



with some of our customers in Århus to see if it could be implemented in their system.

We are very excited to be part of an effort to make information technology more coherent in Region Midt.

New Features:

Features in LDB Desktop

- **New Objects in the database.** In addition to the capability to store Microsoft™ Office documents and pictures in the database, many other objects may now be stored. In practice, any reasonably sized object (less than 5 Megabytes to keep response times low) may be stored. Of course, it is only useful if there is a suitable reader application available, for instance Adobe™ Reader for PDF objects.
- **Integration with MidtEPJ.** We are able to offer this feature for implementation in October 2012. See section **Region Midt** above.
- **Dispatch of E-mails with messages or reports.** It is now possible to send secure E-mails to certain partners in the Danish Health Sector. We are offering the capability of sending reports or messages directly to other departments from inside LDB Desktop, thereby bypassing Outlook or any other E-mail client on the sender's PC. This is especially useful for reporting to other hospitals. The receiver E-mail address is kept inside LDB Desktop and it is therefore impossible to send personal data to a non-secure recipient.

All Danish publicly owned hospitals are secure recipients at this time.

Merry Christmas

We would like to take this opportunity to wish all our customers and collaborators a **Merry Christmas** and a **Happy New Year**.

We are looking forward to doing business with you in 2012.



Company Details:

Langtved Data A/S

Sct. Hansgade 13
DK 4100 Ringsted
Denmark

www.Langtved.eu

Telephone: +45 6565 6586
E-Mail: LD@Langtved.dk

